

**Anti-LIF Antibody**  
**Rabbit polyclonal antibody to LIF**  
**Catalog # AP60332****Specification**

---

**Anti-LIF Antibody - Product Information**

Application	<b>WB, IHC</b>
Primary Accession	<a href="#">P15018</a>
Other Accession	<a href="#">P09056</a>
Reactivity	<b>Human, Mouse, Rat, Pig, Bovine, SARS</b>
Host	<b>Rabbit</b>
Clonality	<b>Polyclonal</b>
Calculated MW	<b>22008</b>

**Anti-LIF Antibody - Additional Information****Gene ID** 3976**Other Names**HILDA; Leukemia inhibitory factor; LIF; Differentiation-stimulating factor; D factor;  
Melanoma-derived LPL inhibitor; MLPLI; Emfilermin**Target/Specificity**

KLH-conjugated synthetic peptide encompassing a sequence within the C-term region of human LIF. The exact sequence is proprietary.

**Dilution**WB~~WB (1/500 - 1/1000), IH (1/50 - 1/200)  
IHC~~1:100~500**Format**

Liquid in 0.42% Potassium phosphate, 0.87% Sodium chloride, pH 7.3, 30% glycerol, and 0.09% (W/V) sodium azide.

**Storage**

Store at -20 °C.Stable for 12 months from date of receipt

**Anti-LIF Antibody - Protein Information****Name** LIF**Synonyms** HILDA**Function**

LIF has the capacity to induce terminal differentiation in leukemic cells. Its activities include the induction of hematopoietic differentiation in normal and myeloid leukemia cells, the induction of neuronal cell differentiation, and the stimulation of acute-phase protein synthesis in hepatocytes.

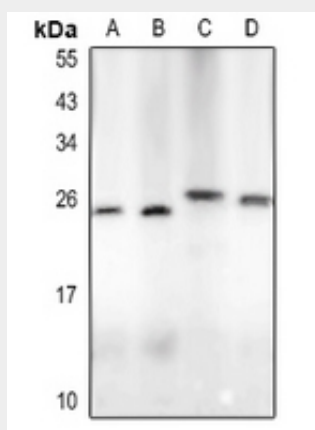
**Cellular Location**  
Secreted.

### Anti-LIF Antibody - Protocols

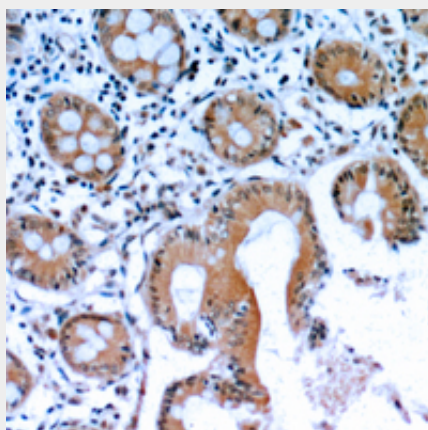
Provided below are standard protocols that you may find useful for product applications.

- [Western Blot](#)
- [Blocking Peptides](#)
- [Dot Blot](#)
- [Immunohistochemistry](#)
- [Immunofluorescence](#)
- [Immunoprecipitation](#)
- [Flow Cytometry](#)
- [Cell Culture](#)

### Anti-LIF Antibody - Images



Western blot analysis of LIF expression in HCT116 (A), LO2 (B), mouse testis (C), rat testis (D) whole cell lysates.



Immunohistochemical analysis of LIF staining in human colon cancer formalin fixed paraffin embedded tissue section. The section was pre-treated using heat mediated antigen retrieval with sodium citrate buffer (pH 6.0). The section was then incubated with the antibody at room temperature and detected using an HRP conjugated compact polymer system. DAB was used as the chromogen. The section was then counterstained with haematoxylin and mounted with DPX.

**Anti-LIF Antibody - Background**

KLH-conjugated synthetic peptide encompassing a sequence within the C-term region of human LIF. The exact sequence is proprietary.